

# Dinosaur Pillow Case - 32" w x 20" h

## Cut the following

**Blue** - 2 - 2" x 11"

2 - 2" x 22 1/2"

4 - 4 1/2" x 5 1/2"

2 - 1 1/2" x 20 1/2"

2 - 20 1/2" x 20 1/2" (Back Pieces)

2 - 4 1/2" x 4 1/2" (Prairie Point)

**Multi Colored** - 2 - 4 1/2" x 12 1/2"

**Green** - 2 - 3 1/2" x 20 1/2"

2 - 4 1/2" x 4 1/2" (Prairie Point)

**Red** - 2 - 1 1/2" x 20 1/2"

2 - 4 1/2" x 4 1/2" (Prairie Point)

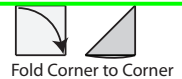
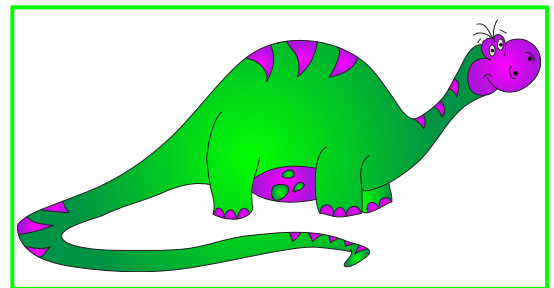
**Fusible Fleece** - 1 - 20 1/2" x 32 1/2"

## Sew the Pillowcase

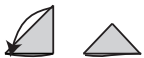
### Sew the Dinosaur Block -

See general instructions for fussy cutting and trimming guidelines

- Fussy cut the Dinosaur 1/4" outside of outline.
- Sew the 2" x 11" blue strips to the sides of dinosaur block. Trim extra to block length.
- Trim block to 22 1/2" width.
- Sew the 2" x 22 1/2" blue strip to the top and bottom of dinosaur block.
- Trim block to 12 1/2" high
- Sew a 4 1/2" x 5 1/2" blue piece to each end of 4 1/2" x 12 1/2" multicolored piece. Sew 2 sets.
- Sew these to top and bottom of dinosaur block.
- Sew a 1 1/2" x 20 1/2" blue piece to each side of dinosaur block.
- Sew a 3 1/2" x 20 1/2" green piece to each side of dinosaur block.
- Sew a 1 1/2" x 20 1/2" red piece to each side of dinosaur block.
- Layer dinosaur block on 20 1/2" x 32 1/2" fleece. Iron to fuse.
- Stitch in the ditch and sew around dinosaur or stipple quilt for added interest (optional).
- Make prairie points from blue, green, and red 4 1/2" x 4 1/2" squares. You will have 6 prairie points (diagram).
- Sew three prairie points to top right. Sew three prairie points to bottom left (diagram). Line up flat side of prairie point with the flat side of pillow top. Prairie points will point towards the middle of pillow case.
- Fold fabric 1/4" to inside along the 20 1/2" side of blue back pieces. Fold 1/4" again and sew close to edge. Sew 2 sets. These are the back pieces.
- Layer back pieces on dinosaur block, right sides together. Back Pieces will overlap. Sew around all 4 sides (diagram).
- Turn right sides out.



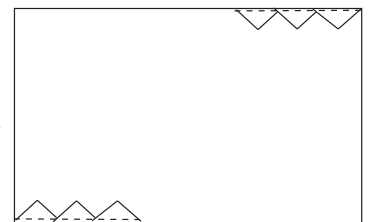
Fold Corner to Corner



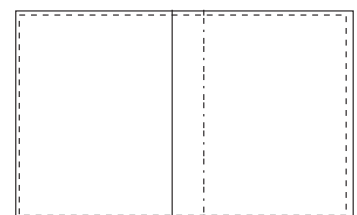
Fold Corner to Corner again

Prairie Points

Prairie Point Placement



Pillow Back



Sew Around All Sides Back Pieces Overlap